

Corrpro Lightning Arrester

Description

Corrpro secondary lightning arrestors are designed to prevent electrical surges from lightning, load switching, or other sources from exceeding the insulation barrier of your equipment. They divert the electrical surge away from your equipment by providing an alternate low resistance path to ground during periods of abnormally high voltage. Corrpro's lightning arrestors are designed to CSA and UL standards, and come in a variety of configurations to meet your needs. They are maintenance free, and can be used for both AC and DC applications. LED indication is available on some models to warn you when the protective elements have been spent, and can be mounted on an electrical panel for easy inspection.

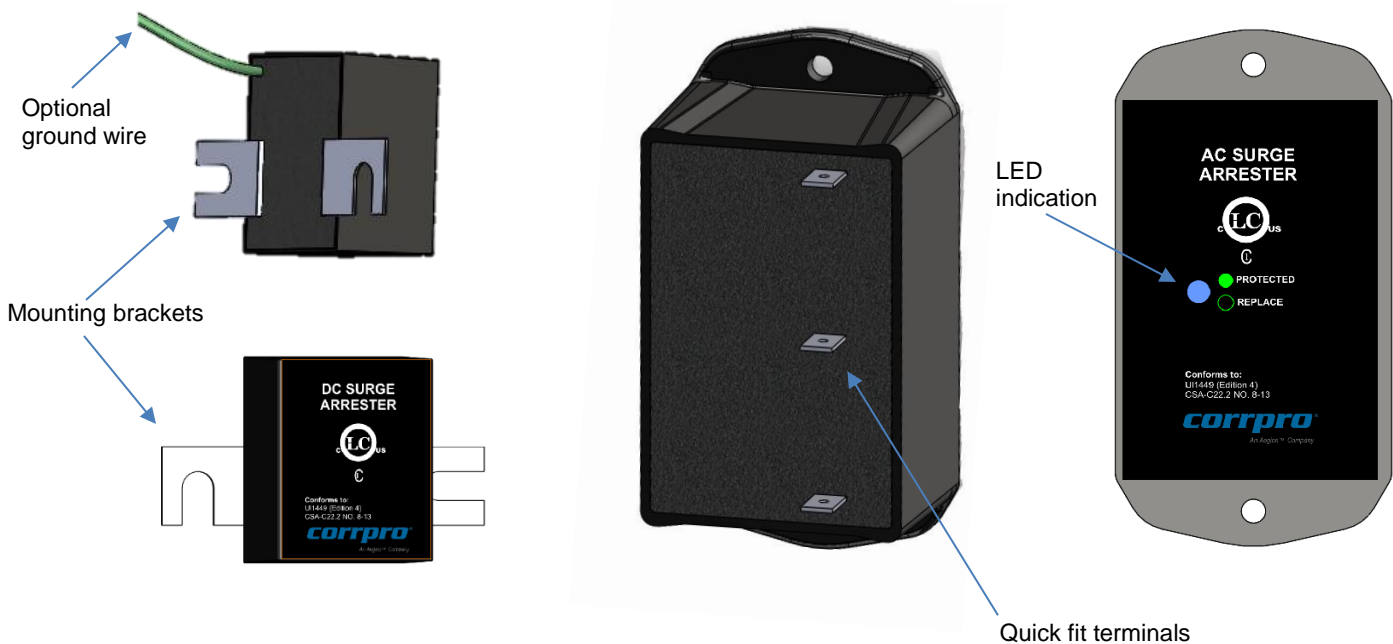


Features

- Available for up to 480VAC or 250V DC systems
- Available in two or three wire configurations
- AC models include LED indication to let you know if the protection is functional
- AC models feature quick fit terminals for ease of installation
- DC models are designed to mount on standard rectifier output lugs for easy access

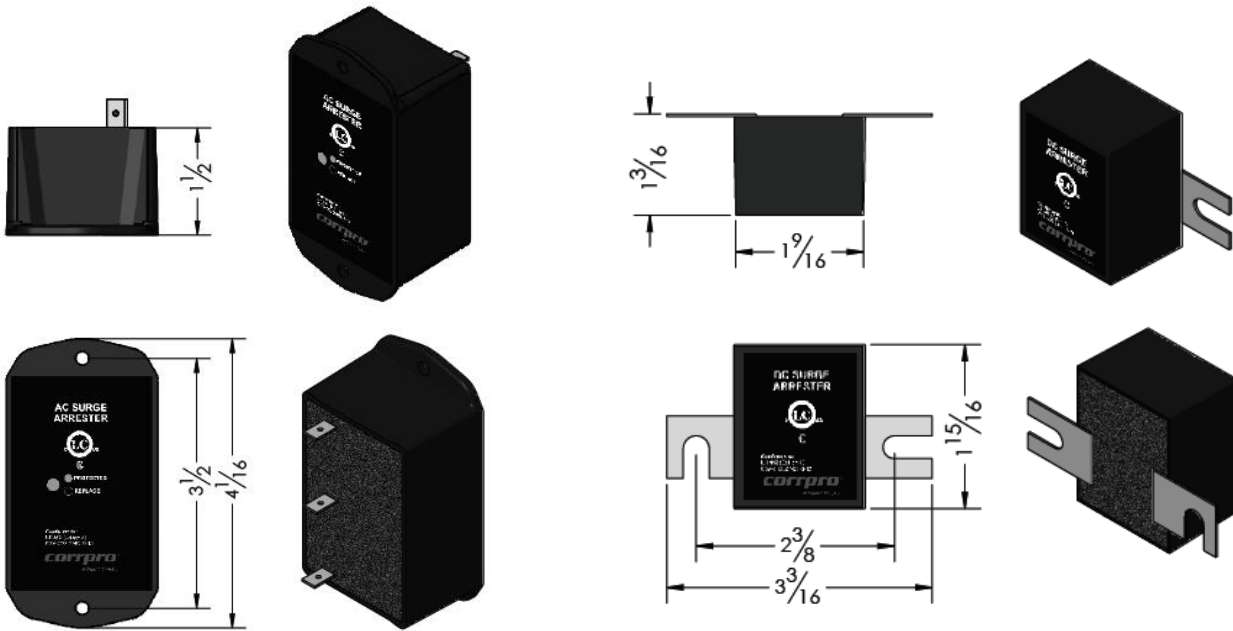
Advantages

- LED indication lets you know when your devices has been spent and needs to be replaced
- Quick fit terminals make field replacements fast and easy
- Higher energy ratings
- Designed and certified to CSA and UL standards
- Small size



Corrpro Lightning Arrester

Dimensions



Specifications

- Operating ambient: -40° to +85°C (-40° to 185°F)

DC Arresters	Max peak current	Maximum energy rating	Clamping voltage
60V DC 3 wire	20kA / line	140J / line (420J)	165V at 200A
100V DC 2 wire	20kA	636J	250V at 600A
100V DC 3 wire	20kA / line	212J / line (636J)	250V at 200A
250V DC 2 wire	20kA	1368J	545V at 600A
250V DC 3 wire	20kA / line	456J / line (1368J)	545V at 200A
AC Arresters	Max peak current	Maximum energy rating	Clamping voltage
115V AC 3 wire	20kA / line	410J / line (1230J)	390V at 200A
240V AC 3 wire	20kA / line	700J / line (2100J)	700V at 200A
480V AC 3 wire	20kA / line	1100J / line (3300J)	1475V at 200A

corrpro®

Corrpro Rectifier Division
 10848 - 214 Street, Edmonton, Alberta, Canada, T5S 2A7
 Tel: 780-447-4565 Fax: 780-447-4248
 E-mail: quotes@corrpro.ca
<http://www.corrpro.ca>